

Biological Instruments Catalogue



SULTAN GROUP
مجموعة سلطان

All Rights Reserved®

Contact

Tell 03335014403, 03070883080

Email sultangroup.org@gmail.com

Website <https://sultangroup.org/sultangroup/home/en>



13027 干湿球温度计
Psychrometer



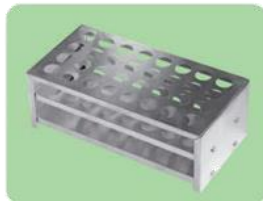
16015 血压计
Sphygmomanometer



02080 高压灭菌锅
Autoclaves Sterilizer



27027 移液器架
Pipette holder



03008 试管架
Test tube rack



02120 保温桶
Insulation bucket



02119 整理箱
Storage box



27010 孵化器
Incubator



27005 接种箱
Inoculation hood



27008 植物光合作用、呼吸作用、蒸腾作用演示器 Demonstration device for photosynthesis, respiration and transpiration of plant



27012 光照培养架
Light incubator rack



02087 恒温培养箱
Incubator



16041 计数器
Counter



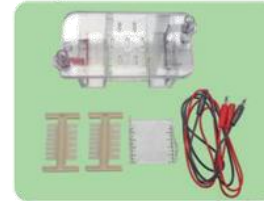
27009 徒手切片器
Manual slicer



27011 研磨过滤器
Grinding filter



27003 解剖盘
Dissecting pan



27022 水平电泳槽
Horizontal electrophoresis tank



27023 垂直电泳槽
Vertical electrophoresis tank



27002 解剖器
Dissector



02089 超净工作台
Superclean bench



27001 解剖器
Dissector



02088 光照培养箱
Light incubator



10015 测微尺
Micrometer



80302 载玻片
Slide glass



80303 盖玻片
Cover glass



27004 骨剪
Bone shears



27006 接种环
Oese



81112 枝剪
Scissor



80310 昆虫针
Insect needle



81111 昆虫网
Insect nets



81113 水网
Water network



81117 橡皮锤
Rubber hammer



81110 展翅板
Spreading board



80309 组织培养基试剂盒
Tissue culture Kit



10015 测微尺
Micrometer



80302 载玻片
Slide glass



80303 盖玻片
Cover glass



27004 骨剪
Bone shears



27006 接种环
Oese



81112 枝剪
Scissor



80310 昆虫针
Insect needle



81111 昆虫网
Insect nets



81113 水网
Water network



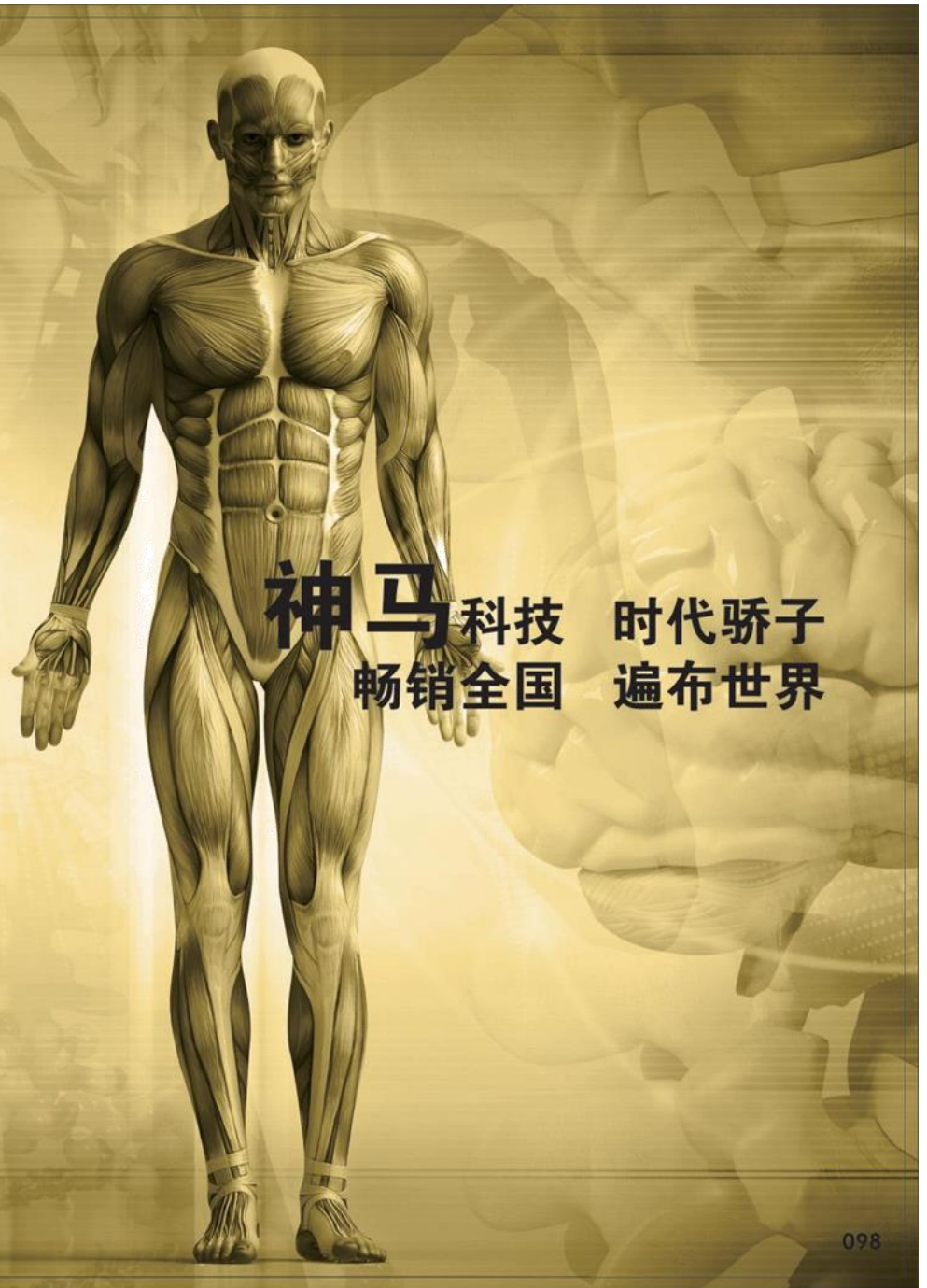
81117 橡皮锤
Rubber hammer



81110 展翅板
Spreading board



80309 组织培养基试剂盒
Tissue culture Kit



神马科技 时代骄子
畅销全国 遍布世界



33203 人体骨骼模型 (170cm)
Human skeleton model (170cm)



33203-1 人体骨骼模型 (170cm)
Human skeleton model (170cm)



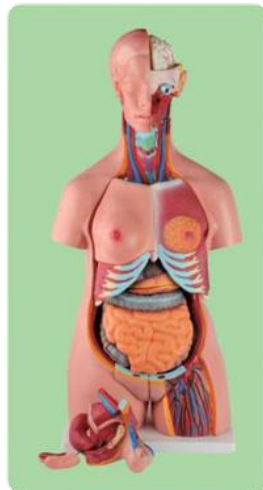
33204 人体骨骼模型
Human skeleton model



39051 儿童骨骼模型
Children skeleton model



XY-203-1 50cm两性人体半身模型
50cm Two sexes half-length human model



XY-203 85cm两性人体躯干模型
85cm Two sexes human torso model



33208 心脏解剖模型 自然大
Heart anatomy model (life size)



33207 心脏解剖模型 3倍大
Heart anatomy model (3X)



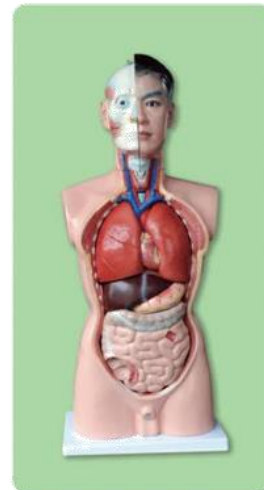
3304 大心脏模型
Giant heart model (large)



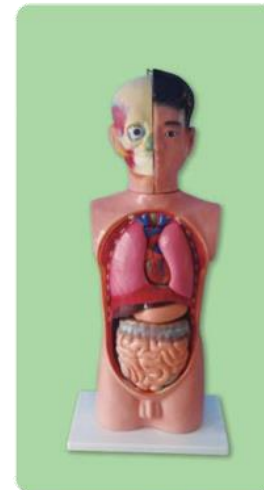
3305 心脏解剖模型 5倍大
Heart anatomy model (5X)



336 透明人体模型
Transparent human model



33201 人体头、颈躯干模型
Human head, neck, torso model



39053 少年人体半身模型
Half-length human model



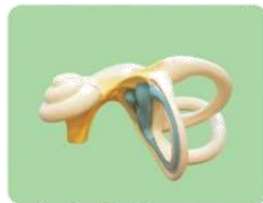
33219 人体肌肉模型
Human muscle model



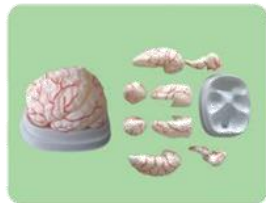
XY-305 大牙模型
Giant teeth model



SM-M024 门齿、犬齿和臼齿
Incisor, canine teeth and molar



XY-353 内耳迷路放大模型
The inner eye enlarged model



33211 脑解剖模型
Brain anatomy model



33211-1 脑解剖模型
Brain anatomy model



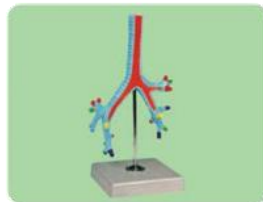
SM-M001 脑功能区模型
Brain with different functional area



XY-309 鼻解剖模型
Nasal anatomical model



3315 脑干放大模型
Brain stem enlargement model



160 支气管模型
Bronchial model



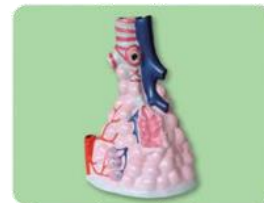
3329 肾解剖模型
Renal anatomy model



33216 肝、十二指肠、胰脏模型
Liver and duodenum, pancreas model



SM-M010 胰脏、十二指肠和脾脏
Pancreas, duodenum and spleen



33210 肺泡模型
Alveolar model



33212-1 耳解剖模型 (3X)
Ear anatomy model (3X)



33212 耳解剖模型 (6X)
Ear anatomy model (6X)



337-1 牙保健模型
Dental care model



39052 儿童牙列模型
Children's teeth model



33221 牙列及磨齿解剖模型
Teeth and gear grinding anatomical model



33215 立体皮肤结构模型
Skin structure model



33215-1 皮肤结构模型
Skin Structure Model



33206 眼球仪
Eye model



33205 眼球解剖模型
Eye anatomy model



39054 眼构造模型
Eye structure model



SM-M016 眼球模型(带眼眶)
Eye model(with orbita)



SM-M006 听小骨
Auditory ossicles (malleus, incus, stapes)



SM-M017 膀胱模型
Bladder model



33222 胃解剖模型
Stomach anatomy model



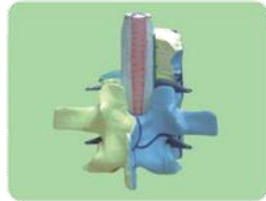
SM-M018 睾丸模型
Testis model



33209 喉解剖模型
Laryngeal anatomy model



SM-M011 头示咽肌模型
Head with pharynx muscles



3308 脊椎与椎骨模型
Spine and vertebrae model



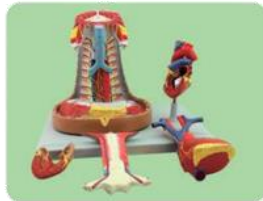
161 透明肺泡模型
Alveolar model



SM-M037 肺对比模型
Lung comparison model



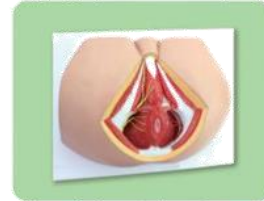
SM-M013 头颈模型
Model of head neck



SM-M014 人体纵隔模型
Mediastinum model



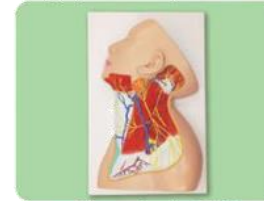
SM-M019 女性盆腔解剖模型
Block model of female pelvis with 8weeks old embryo



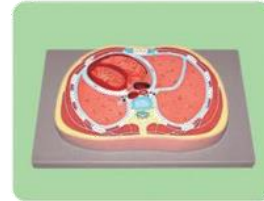
SM-M020 男性会阴神经血管模型
Male perineum



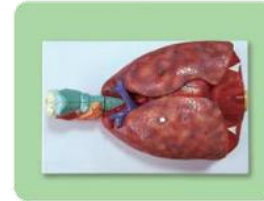
SM-M022 人体直肠肛管解剖模型
Rectum and anal canal



SM-M012 颈部神经模型
Model of nerves at neck region



SM-M005 人体纵隔切面模型
Cross section through heart level



XY-320 喉、心、肺模型
Larynx heart and lung model



SM-M023 盲肠和阑尾
Caecum and appendix



SM-M030 骶骨和尾骨模型
Sacrum and coccyx model



SM-M008 骨质疏松模型
Osteoporosis model



SM-M002 脊髓和脊神经, 脊髓神经模型
Model of vertebrae, spinal cord, spinal nerve and sympathetic column



SM-M025 脊髓颈椎枕骨模型
Cervical vertebrae occipital bone with spinal cord



SM-M026 腰椎带尾椎骨模型
Lumbar vertebra, sacrum bone with spinal nerves



SM-M027 胸椎带脊髓模型
Thoracic vertebrae with spinal cord



SM154 彩色自然大头骨模型
Color natural giant skull model



SM155 自然大头骨模型
Natural giant skull model



XY-451 新生儿护理(男、女)
Newborn baby for nursing(boy, girl)



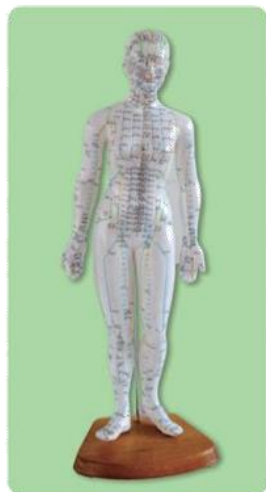
33213 男性泌尿生殖系统模型
Male urogenital system model



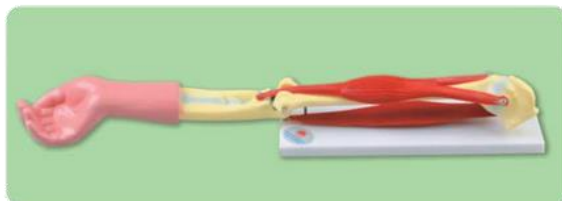
33214 女性泌尿生殖系统模型
Female urogenital system model



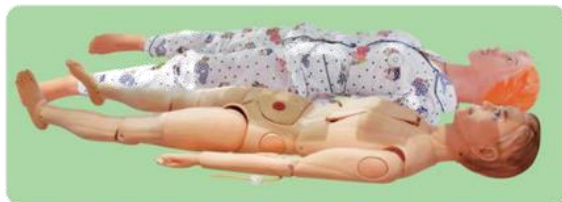
XY-453 头部穴位模型
Head acupuncture point model



SM160 人体针灸模型(48CM女性)
Human body acupuncture model
(48cm, female)



33220 肘关节活动模型 Elbow model



33226 护理人模型 Demonstration model for nursing



SM-M004 蝶骨
Sphenoid bone



3339 男性骨盆模型
Male pelvis model



3340 女性骨盆模型
Female pelvis model



3338 第四第五腰椎模型
Model of pelvis with 4th and 5th



3337 女性骨盆及盆底肌肉模型
Female pelvis and pelvic floor muscle
model



SM-M007 骨盆附腰椎与股骨头模型
Model of pelvis with 4th, 5th lumbar
vertebra and femur head



SM156 正常腰椎组合(四节)
Normal lumbar spine(4 parts)



SM156-1 正常腰椎组合(三节)
Normal lumbar spine(3 parts)



SM156-2 正常腰椎组合(二节)
Normal lumbar spine(2 parts)



SM159 按摩足(12CM)
Foot massage (12CM)



XY-323 手掌解剖模型
Palm anatomic model



SM161 自然大骨盆带五节腰椎模型
Five lumbar pelvic girdle model
(Natural size)



SM151 自然大手关节模型
Natural giant hand joint model



156 手指关节模型
Finger bone model



3325 手关节模型
Joints of hand model



155 脚骨模型
Foot bone model



SM153 自然大肘关节模型
Natural giant elbow joint model



SM152 自然脚关节模型
Natural giant foot joint model



3393 脊椎与股盆模型
Spine and femoral basin model



3393-1 脊椎与股盆模型
Spine and femoral basin model



SM-M031 脊柱带股骨
Spine with femur



SM-M035 脊柱带股骨
Spine with femur



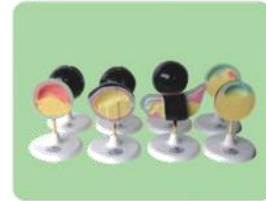
33305 减数分裂中染色体变化的组件
Components of chromosome variation
in meiosis



3137 动植物细胞有丝分裂
Model of animal cell mitosis



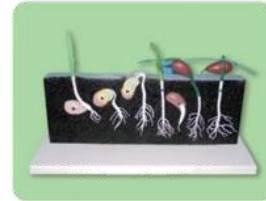
3233 ABO血型实验盒
ABO type experimental box



33102 蛙胚胎发育模型
Frog fetal development model



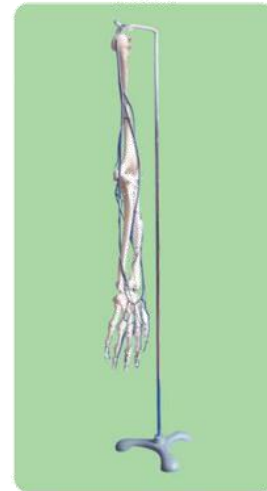
A600 人体胚胎发育模型
Human embryonic development
model



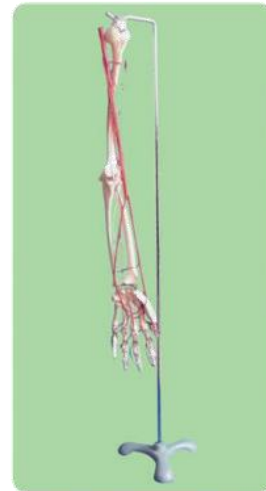
SM-M046 种子发芽模型
Model of seeds germination



3316 成人血管腿模型
Adult's blood vessel leg model



3317 成人血管上肢模型
Adult's blood vessel upper limb model



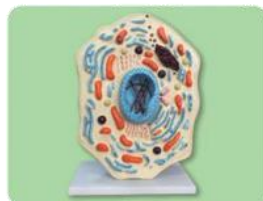
3318 成人血管手臂模型
Adult's blood vessel arm model



33307 DNA双螺旋结构模型
DNA double helix structure model



33306 DNA结构模型
DNA structure model



SM-M39 动物细胞模型
Animal cell model



3309 神经元细胞模型
Neurons model



3226 脊椎动物前肢骨骼比较模型
Vertebrate forelimb bones comparison model



33217 肾单位、肾小体放大模型
Nephron renal corpuscle enlarge model



3327 条件反射演示器
Conditioned reflex demonstration



3331 家鸽双重呼吸系统演示器
Pigeon double-breath demonstration



33225 膈肌运动模拟器
Diaphragm movement demonstration model



33218 心搏与血液循环模型
Heart beat and blood circulation model



33223 尿的形成动态模型
The formation of urinary dynamic model



33224 人体呼吸运动模型
Human respiratory motion model



33001 植物细胞模型
Plant cell model



33001-1 植物细胞模型
Plant cell model



SM-M40 植物细胞模型
Plant cell model



33004 单子叶植物茎模型
Monocotyledon root model



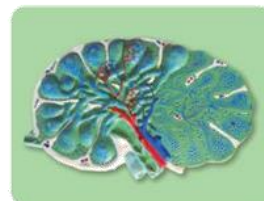
33005 双子叶草本植物模型
Dicotyledon root model



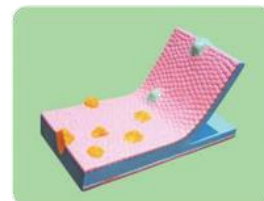
33006 叶构造模型
Leaf structure model



33003 导管、筛管结构模型
Vessel and sieve structure model



3318 淋巴结放大模型
Lymph node model



33304 细胞膜流动镶嵌模型组件
Cell fluid mosaic model



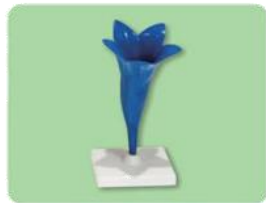
33302 细胞亚显微结构模型
Cell submicroscopic structure model



33303 细胞膜结构模型
Cell membrane structure model



3224 细胞器结构模型
Organelle structure model



SM302 玉米花模型
Cornflower model



SM303 土豆花模型
Potato flower model



SM305 油菜花模型
Cole flower model



33007 桃花模型
Mahogany model



SM306 豌豆花模型
Pea flower model



SM-M49 太阳花模型
Sunflower model



33008 小麦花模型
Wheat flower model



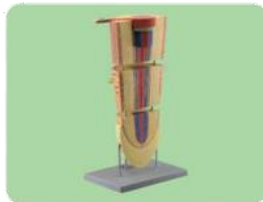
SM-M50 苹果花模型
Apple Flower Model



SM304 郁金香模型
Tulip model



33002 根纵剖模型
Root longitudinal cutaway model



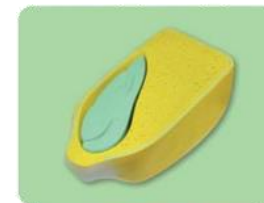
3135 双子叶植物根模型
Dicotyledon root model



3204 单子叶植物根模型
Monocotyledon root model



3416 芽结构模型
Bud structure model



SM-M42 玉米籽粒解剖模型
Model of corn seed



SM-M43 芥菜胚发育模型
The development of Capsella embryo model



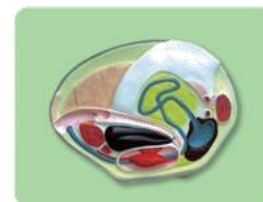
3209 衣藻模型
Chlamydomonas model



SM-M38 病毒模型
Virus model



3417 叶绿体模型
The chloroplast model



3222 河蚌解剖模型
Mussel anatomical model



3214 水螅解剖模型
Polyps anatomy model



3214-1 水螅解剖模型
Polyps anatomy model



SM-M47 鱼解剖模型
The fish model



3349 鸡模型
The chicken model



3348 兔子模型
The rabbit model



33101 蝗虫解剖模型
Grasshopper anatomy model



33103 草履虫模型
Paramecium model



33104 蚯蚓解剖模型
Earthworm model



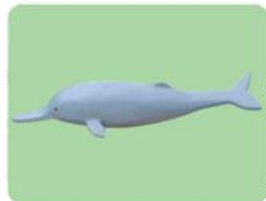
33105 血吸虫模型
Schistosomiasis Model



3234 仿真扬子鳄
Simulation alligator



3235 仿真穿山甲模型
Simulation pangolin



3236 仿真白鳍豚
Simulation baiji



3237 仿真鸭嘴兽
Simulation platypus



33301 始祖鸟化石及复原模型
Archaeopteryx fossil and recovery model



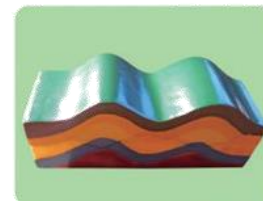
3240 仿真杜鹃
Simulation cuckoo



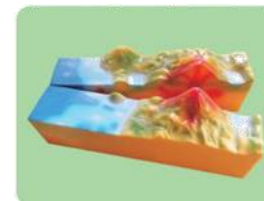
39101 啄木鸟仿真模型
Simulation woodpecker



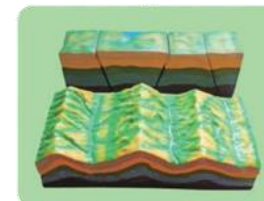
39102 猫头鹰仿真模型
Simulation owl



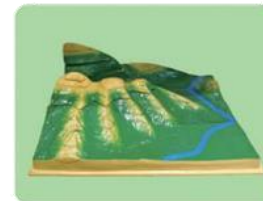
28023 地壳变动演示器
Demonstration device for crustal movement



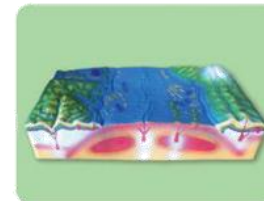
QH345 火山模型
Volcanic model



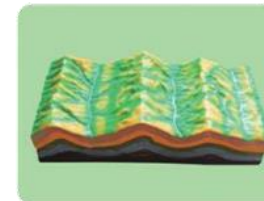
28022 断层褶皱演示器
Fault fold demonstration



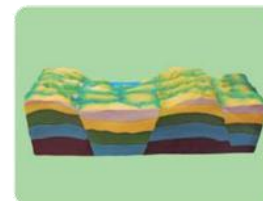
34015 等高线地形图判读模型
Contour map interpretation model



34019 板块结构及地表形态模型
Plate tectonics structure and surface configuration model



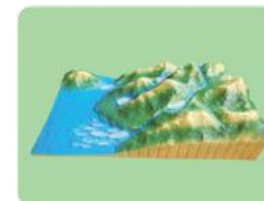
34020 褶皱构造及其地貌演变模型
Fold structure and morphological evolution model



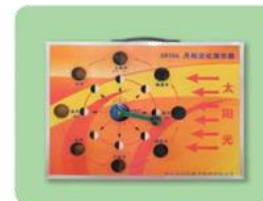
34021 断裂结构及地垒地堑发育模型
Fracture structure and horst graben development model



28021 流水作用演示装置
Fluviation demonstration



28020 沉积作用演示装置
Deposition action demonstration



39156 月相变化演示器
Moon's phase demonstration model



32001 炼铁高炉模型
Ironmaking Blast Furnace model



32040 炼钢转炉模型
Steelmaking converter model



3115 鱼解剖模型
Relief model of fish



3116 青蛙解剖模型
Relief model of frog



3117 甲壳虫解剖模型
Relief model of beetle



3118 狗解剖模型
Relief model of dog



3122 蜥蜴解剖模型
Relief model of anat lizard



3120 蚯蚓解剖模型
Relief model of earthworm



3113 牛胃的人体模型
Relief model of cow stomach



3114 人体生殖系统模型
Relief model of human genital system



3119 兔解剖模型
Relief model of rabbit



3121 鸽解剖模型
Relief model of pigeon



3108 泌尿系统人体模型
Relief model of urinary organs



3110 动物心脏模型
Ewliwf model of the heart



3112 呼吸系统模型
Relief model of respiration organs



3123 蜗牛解剖模型
Relief model of anat snail



3127 肝脏模型
Relief model of liver leaf



3128 肾模型
Relief model of anat kidney



3130 人类头部模型
Relief model of human head



3131 皮肤模型
Relief model of skin



SM-M51 植物细胞
Relief model of plant cell



3129 始祖鸟模型
Relief model of archaopteryx



3134 耳朵模型
Relief model of ear



3133 眼球成像模型
Relief model of eye



SM-M52 内耳模型
Relief model of internal ear



3124 人类内分泌系统模型
Relief model of human incretion system



3125 胃解剖放大模型
Relief model of human stomach



3126 肾脏模型
Relief model of kidney



34001 平面政区地球仪
Administrative globe



34002 平面地形地球仪
Plane terrain globe



34002-1 平面地形地球仪
Plane terrain globe



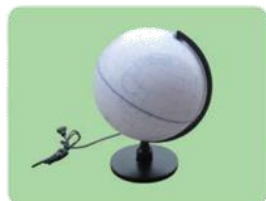
34004 立体地形地球仪
Three dimensional terrain globe



34005 平面两用地球仪
Plane dual-purpose globe



34008 填充地球仪
Filled globe



34007 填充地球仪
Filled globe



34009 经纬度模型
Latitude and longitude model



34010 天球仪
Celestial globe



28005 太阳视运动仪
Solar motion instrument



34011 月球仪
Lunar globe



34012 月球仪
Lunar globe



39152 地球构造模型
Tectonic model of the earth



34006 充气式填充地球仪
Inflatable filled globe



28008 月球运行仪
Lunarium



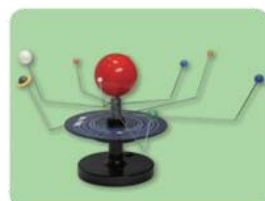
28001 地球运行仪
Loxocosm



28002 晨昏仪
Twilight instrument



28007 三球仪
Model of sun-moon-earth



28006 天体运行仪
Celestial apparatus



34016 中国地形模型
Chinese terrain model



34017 中国政区拼接及组合模型
Chinese District splicing and combination model



34018 中国政区拼接模型
Chinese government district mosaic model



34023 世界立体地形模型
Three-dimensional terrain model of the world



34024 中国立体地形模型
Three-dimensional terrain model of China



12016 世界钟
World Clock



16051 天文历
Ephemeris



16027 日照计
Sunshine Recorder



03020 温度表支架
Thermometer bracket



16024 轻风表
Light air meter



02062 数码式天文望远镜
Digital astronomical telescope



16020 毛发表
Hair meter



16040 噪声测定仪
Noise tester



81034 投影片绘制工具
Projecting slide drawing tool



28029 环境速测箱
Environmental speed measuring box



16022 雨量器
Rainfall recorder



28034 云雾发生器
Fog occurrence experiment device



16026 电接风向风速仪
Electric anemograph



16031 测量标杆
Measuring pole



16052 透明度计
Transparency meter



16021 蒸发器
Evaporator



03021 百叶箱及支架
Shutter box bracket



16044 粉尘测定仪
Dust tester



13025 自记温度计
Self-registering thermometer



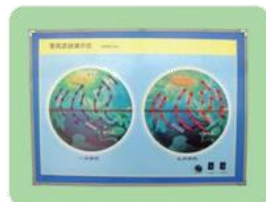
28033 大气粉尘观察器
The atmospheric dust observer



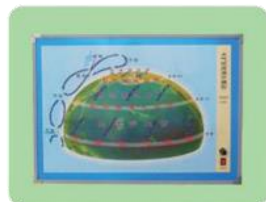
16054 简易比色计
Simple colorimeter



28035 酸雨自动分离器
Acid rain automatic separator



28024 季风活动演示仪
Monsoon activity demonstrator



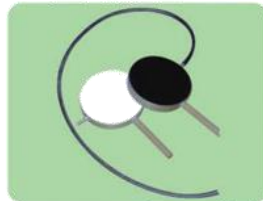
28026 大气环流实验器
Atmospheric circulation experiment device



1008-2 抽气枪
Manual vacuum



1008-4 带表抽气枪
Manual vacuum pump



SM202 热辐射
Hot radiation instrument



SM852 凹凸面镜 (手持)
Concave and convex mirror(handle)



27026 微量移液器
Mini liquid moving instrument



SM880 简易移液器
Simple liquid moving instrument



SM859 滑轮
Pulley



SM884 七件打孔器
Seven pieces of punch



0207-1 电火花计时器
Electronic sparker timer



SM864 圆盘测力计
Disk dynamometer



SM071 气柱共鸣
Air column resonance



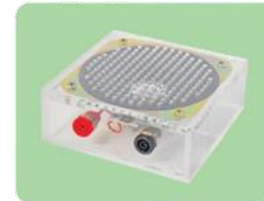
SM058 绿色激光光源
Green laser light source



SM809 单刀盒
Single-pole box



SM810 电容盒
Capacitance box



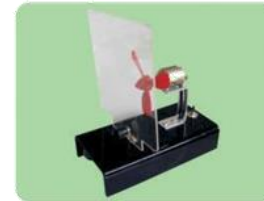
SM815 喇叭
Loudspeaker



SM808 太阳能汽车
Solar powered auto



SM042 弹导小车
Guided missile car



SM055 反冲运动演示器
Reversed impulsive force demonstrator



SM866 电解槽
Electrolytic tank



SM863 磁感线
Magnetic induction line



2606-1 水电解演示器
Water electrolysis demonstrator



SM827 电解槽
Electrolytic tank



SM855 电解质溶液导电实验器
Conduction experiment of electrolyte liquor



SM854 电解器
Electrolyzer



SM838 立方体组
Cube group



SM822 密度块
Set of density blocks



SM831 槽码
Groove code



29004-3 密度块
Set of density blocks



29004-4 密度块
Set of density blocks



29004-2 密度块
Set of density blocks



SM116 塑料钩码
Plastic hook code



SM857 电阻定律实验器
Resistance law experiment set



SM856 电阻圈
Resistance laps



SM853 电池盒实验器
Experiment box



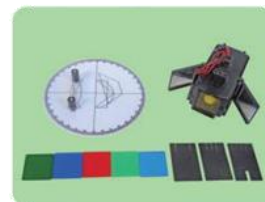
SM828 电学套装
Electrical suit



SM826 互联瓶
Interconnected bottle



SM885 绳波演示器
Rope wave demonstration device



SM877 光学套装
Optical suit



SM881 钠灯
Sodium lamp



SM297 电磁感应演示器
Electromagnetic induction
demonstration device



SM299 可拆变压器
Detachable transformer



SM830 电磁偏转束
Electromagnetic deflection beam



SM115 能的转化实验器
Energy conversion experiment device



SM203 能的转化演示器
Demonstration apparatus for
energy transforming



SM858 磁感线演示器
Multibase



SM201 供电箱
Power service box



SM310 火箭发射模拟装置
Launcher for rocket



SM204 稳固作用实验仪
Steady effecton instrument



Thanks

All Rights Reserved®

Contact

Tell 03335014403, 03070883080

Email sultangroup.org@gmail.com

Website <https://sultangroup.org/sultangroup/home/en>